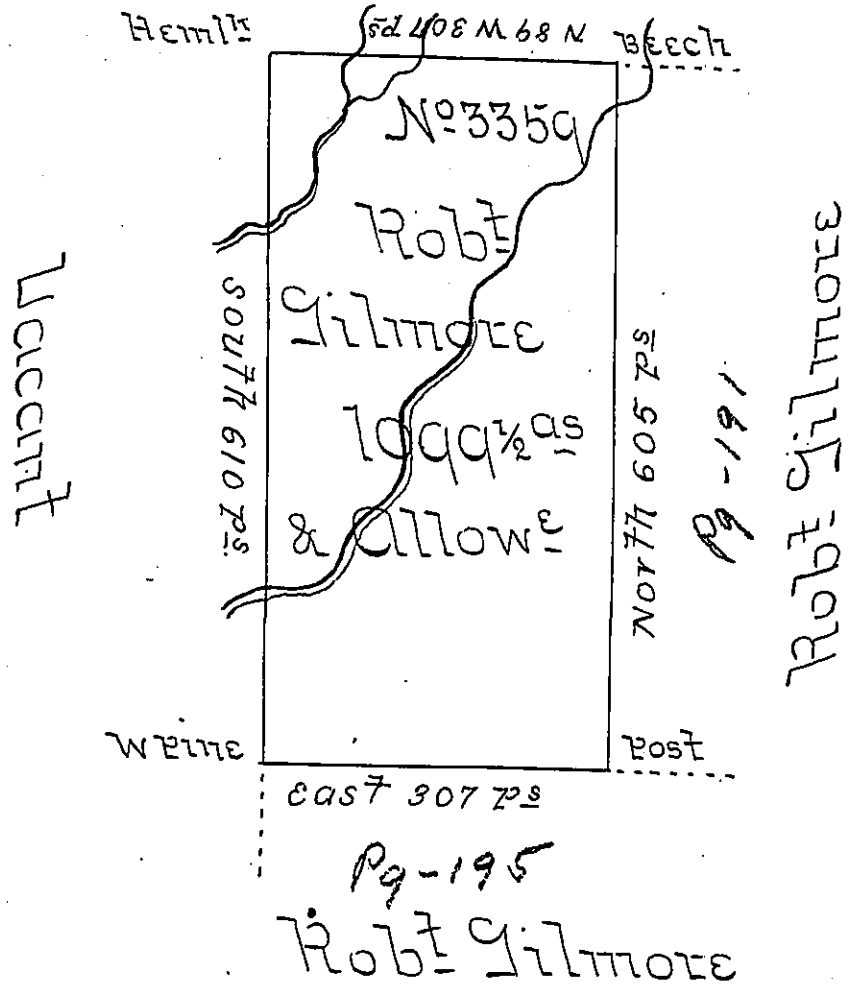


State of New York



Surveyed the above described tract of land on the seventh day of the 11th mo 1793 for Robert Gilmore in pursuance of his Warrant dated the 14th day of the Decem^r 1792 adjoining his other land and the State of New York containing one thousand and Ninety Nine Acres and a half and the allowance of six Percent.

William Ellis DS

Daniel Brodhead Esquire
Surveyor General

IN TESTIMONY that the above is a copy of the original remaining on file in the Department of Internal Affairs of Pennsylvania, made conformably to an Act of Assembly approved the 16th day of February, 1833, I have hereunto set my Hand and caused the Seal of said Department to be affixed at Harrisburg, this third day of January 1905.

Loae D. Brown
Secretary of Internal Affairs.